

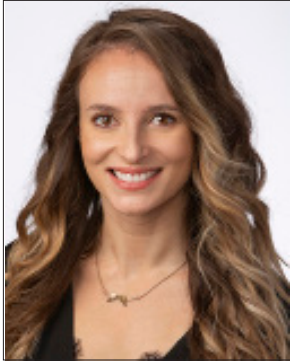
Leslie R. Kolafa

Associate

lkolafa@weintraub.com

t: 916.558.6058

f: 916.446.1611



Education

J.D., Southwestern Law School, 2011

B.A., University of California, Davis, 2008

Bar Admissions

California

Affiliations & Awards

State Bar of California, Trust and Estates Section, Member

Sacramento County Bar Association, Probate and Estate Planning Section, Member

Sacramento Business Journal's Best of the Bar - 2019

weintraub | tobin

PRACTICE AREA

Trusts & Estates

Leslie is an associate in the firm's Trusts and Estates group. Her practice focuses on all aspects of trust and estate litigation, including contested trust administrations, probate, contested conservatorships, and elder abuse. Leslie also represents clients in uncontested matters such as trust and estate administrations, conservatorships, and fiduciary representation.

Leslie graduated magna cum laude from Southwestern Law School, where she was on the board of the Southwestern Law Review. Leslie received her Bachelor of Arts in both Comparative Literature and Political Science with a minor in Greek from the University of California, Davis.

ATTORNEY PROFILE